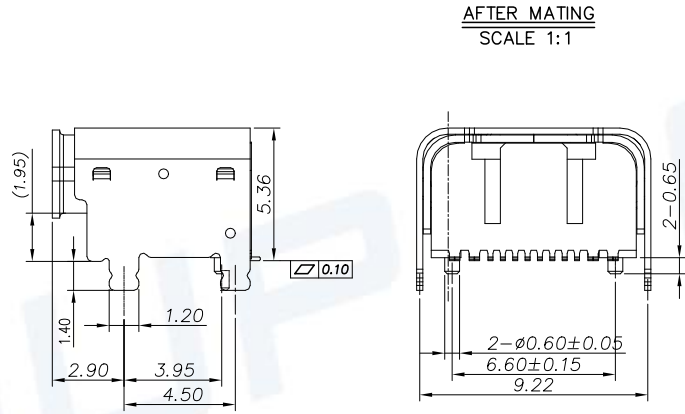
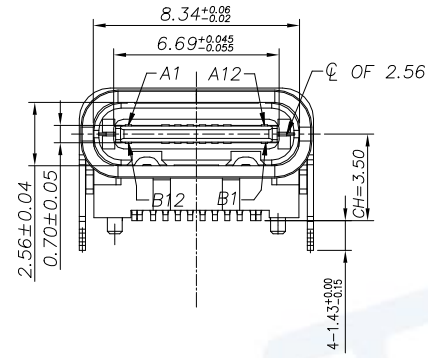
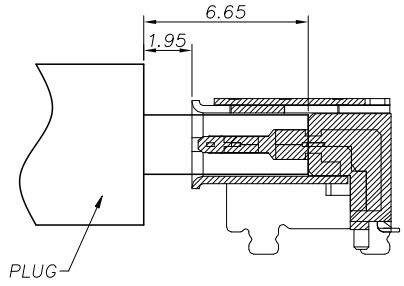
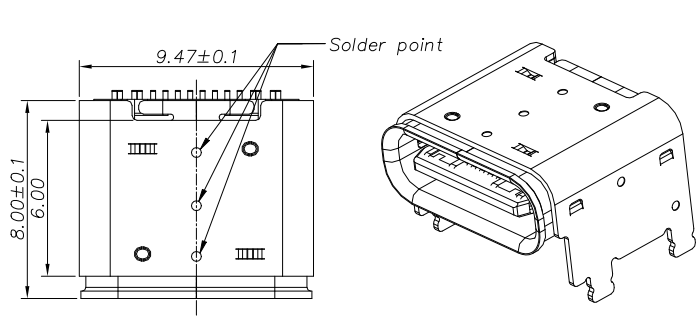
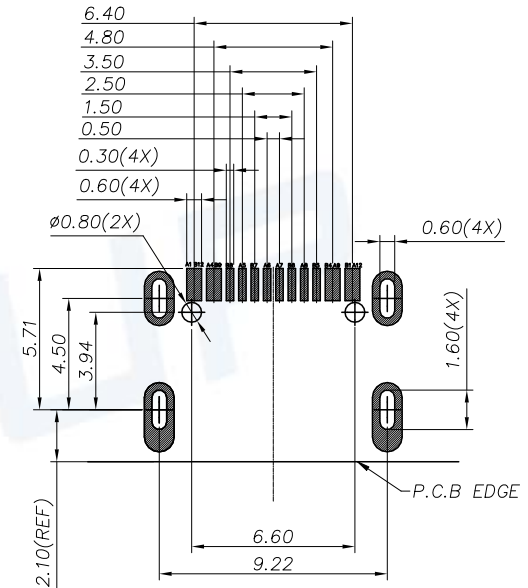


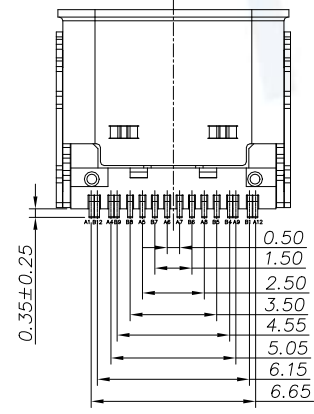
REV.	DESCRIPTION OF REVISIONS	APPR.	CHEC.	DRAW.	DATE
△	NEW			HUABO	2023/02/10
△	Original Model U20404-5A			HUABO	2023/11/25



AFTER MATING  
SCALE 1:1



RECOMMEND P.C.B LAYOUT(COMPONENT SIDE)  
TOLERANCE FOR PCB LAYOUT IS ± 0.05



USB TYPE-C PIN ASSIGNMENTS

PIN NUMBER	SIGNAL NAME
A1	GND
A4	VBUS
A5	CC1
A6	Dp1
A7	Dn1
A8	SBU1
A9	VBUS
A12	GND
B12	GND
B9	VBUS
B8	SBU2
B7	Dn2
B6	Dp2
B5	CC2
B4	VBUS
B1	GND

NOTE:

- MECHANICAL PERFORMANCE,
  - 1-1. INSERTION FORCE: 0.5~2.0kgf.
  - 1-2. REMOVAL FORCE: 0.8kgf~2.0kgf.
  - 1-3. DURABILITY: 10000 CYCLES.
- ELECTRICAL PERFORMANCE,
  - 2-1. CURRENT RATING: 5A  
VOLTAGE RATING: 20V
  - 2-2. INSULATION RESISTANCE: 100MΩ MIN
  - 2-3. DIELECTRIC WITHSTAND VOLTAGE, AC 100V FOR 1 MINUTE.
  - 2-4. LOW CONTACT RESISTANCE: INITIAL 40MΩ  
AFTER 50MΩ
- ENVIRONMENTAL PERFORMANCE:
  - OPERATING TEMPERATURE: -30° C~+80° C.
  - IR REFLOW:  
THE PEAK TEMPERATURE ON THE BOARD SHALL BE MAINTAINED FOR 10 SECONDS AT 260° C.

ITEM.	PART NAME	Q'TY	MATERIAL	FINISH
5	OUTER SHELL	1	SUS304 T=0.25MM	NI 30U*MIN
4	INNER SHELL	1	SUS304 T=0.30MM	NI 30U*MIN
3	SHIELDING PLATE	1	SUS301 T=0.15MM	N/A
2	CONTACT	16	COPPER ALLOY T=0.15MM	Contact area : Gold plated
1	INSERT MOLDING	1	LCP UL94V-0	BLACK

Unless otherwise specified, other tolerance are:

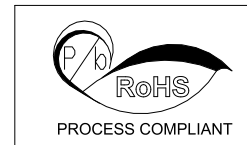
**MUP** MUP INDUSTRIAL CO.,LTD.

NAME: **USB Type-c connector**

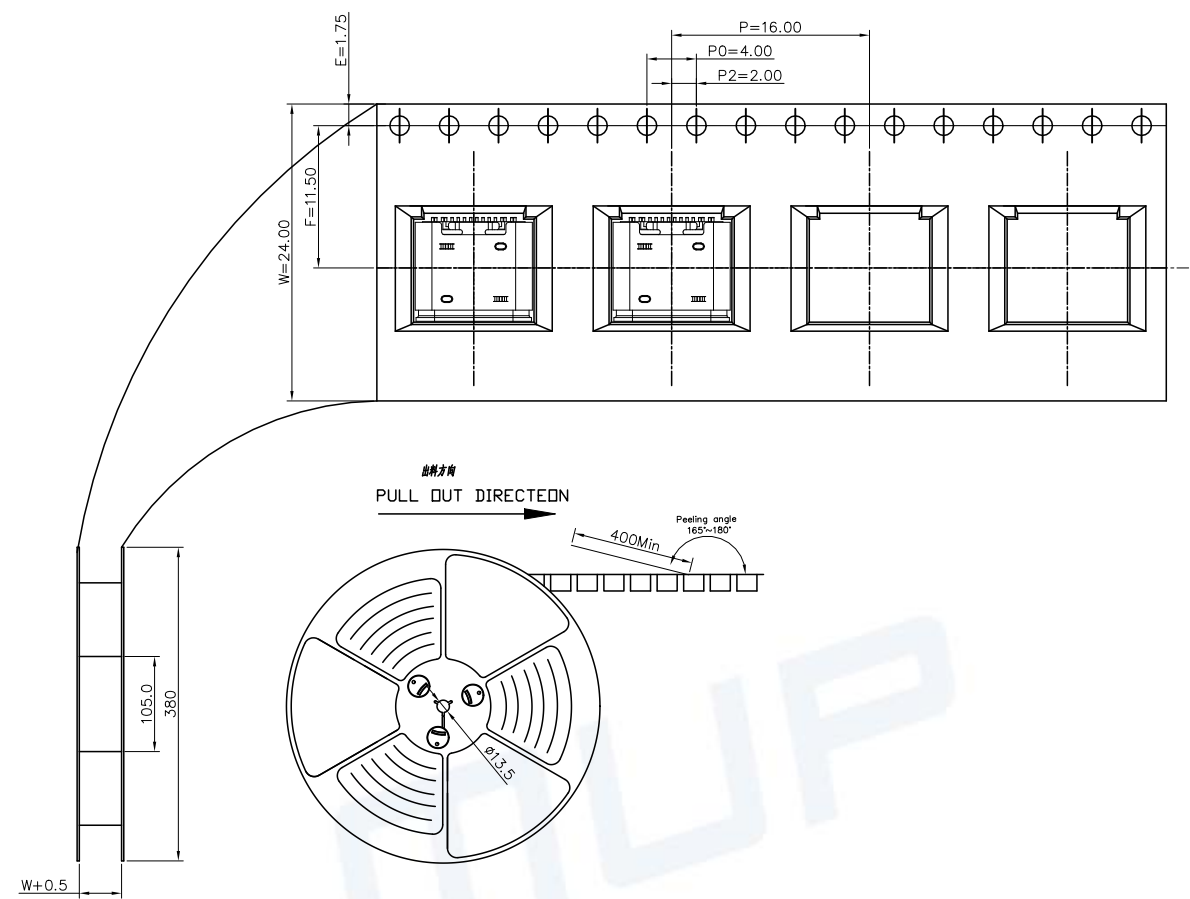
MODEL NO: **MUP-U20404-05**

TYPE : 16P 母座 L=8.0 CH=3.50 垫高1.90 板上四脚插 带柱 端子SMT

PROJ.	UNIT	SCALE	DRAWN	Huabo 2023/02/10	DWG NO.:	DWG-U20404-05-01
UNIT	mm	1:1	CHECKED	Keey 2023/02/10	SHEET	1/2
CUSTOMER DRAWING			APPROVAL	Simon 2023/02/10	REVISION	2



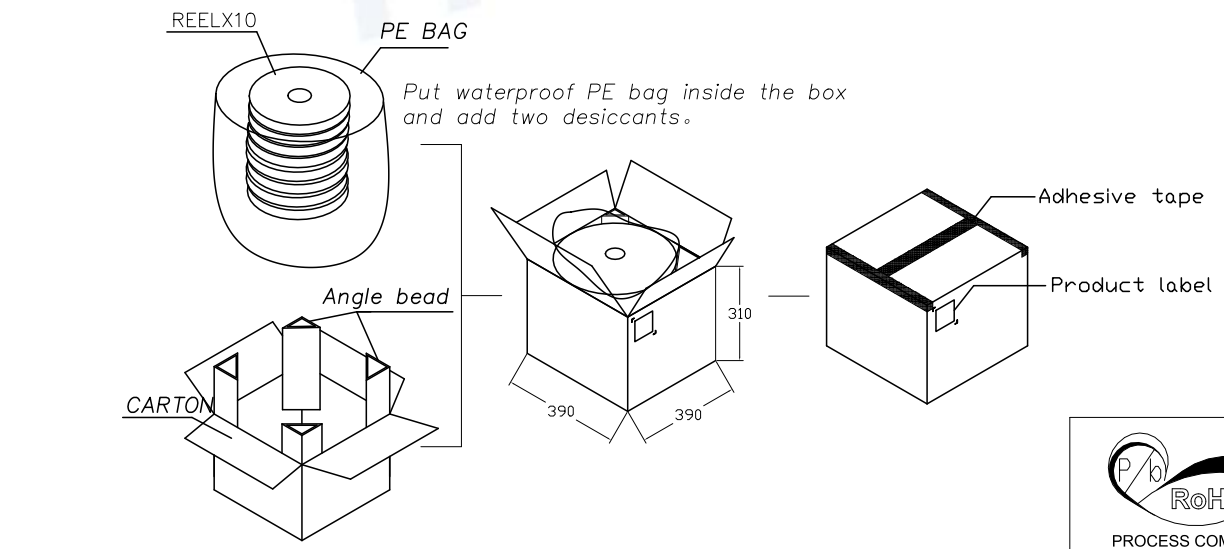
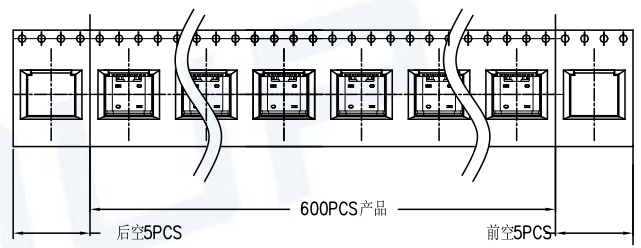
REV.	DESCRIPTION OF REVISIONS	APPR.	CHEC.	DRAW.	DATE
△	NEW			HUABO	2023/02/10
△	Original Model U20404-5A			HUABO	2023/11/25



NOTES

1. 帶子引導長度  
LEAD TAPE LENGTH

出料方向  
PULL OUT DIRECTEON



包裝容量 (Packing Capacity)

pcs/box	boxs/Carton	Pcs/Box
600	10	6000

Unless otherwise specified, other tolerance are:			<b>MUP</b> <sup>®</sup> MUP INDUSTRIAL CO.,LTD. NAME: <b>USB Type-c connector</b>		
X ±0.45	X* ±5°				
X.X ±0.35	X.X* ±4°		TYPE : 16P 母座 L=8.0 CH=3.50 墊高1.90 板上四腳插 帶柱 端子SMT		
X.XX ±0.25	X.XX* ±3°		PROJ.	UNIT	SCALE
X.XXX ±0.15	X.XXX* ±2°		mm	1:1	
CUSTOMER DRAWING			DRAWN	Huabo 2023/02/10	DWG NO.:
			CHECKED	Keey 2023/02/10	DWG-U20404-05-01
			APPROVAL	Simon 2023/02/10	SHEET
					REVISION
					2/2
					2

